

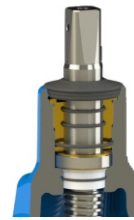
Resilient seated Gate valve with ISO fitting for PE pipe both ends

PN16

WATER



Gate valve DN32 ISO40



Packing cork protected against unscrewing and fully covered by additional cleaning gasket

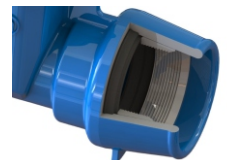
Horizontal and vertical double spindle bearing



Replaceable wedge nut



Sealing with the clamping ring and O-ring



Product description (standard execution):

- Body bonnet and wedge made of ductile cast iron EN-GJS 400-15
- POM tube clamping ring protection against slipping
- Full bore gate valve
- Outside and inside full vulcanized wedge by NBR EPDM; DN25 and DN32 made of brass EN 1412
- Forged replaceable wedge nut made of brass for gate valve DN40 and DN50
- Application of low friction sliding element for gate valve DN40 and DN50
- Stainless steel spindle with rolled thread
- Low friction double spindle bearing both horizontal and vertical way
- O-ring spindle sealing packing cork protected against medium
- Under pressure replaceable packing cork
- Forged packing cork protected against unscrewing
- Packing cork protected against dirt penetration
- Body bonnet Zinc coated screws protected by wax
- Epoxy coating minimum 250 microns according to EN 14901 GSK RAL certificate
- Article according to EN 1074-1, EN 1074-2
- Face to face according to producer documentation JAFAR
- Product marking according to EN 19; EN 1074

Application:

Water networks and tanks. Transport of non aggressive liquids.
Working conditions:
temp. up +70°C
pressure up to 1,6 MPa

Execution variant:

Ductile cast iron EN-GJS 500-7
SS body bonnet screws

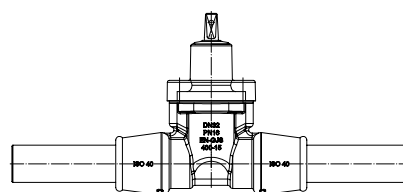
Test control:

Hydraulic test according to EN 1074-1, EN 1074-2; EN 12266-1
Seat 1,1 x PN
Body 1,5 x PN
Operation torque test

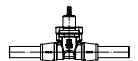
Accessories:

Extension spindle - see: 9010, 9011
Welt for ISO connections - see: 9306
Street box - see: 9501 9503 9504 9509

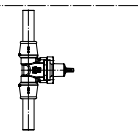
Installation:



Recommended



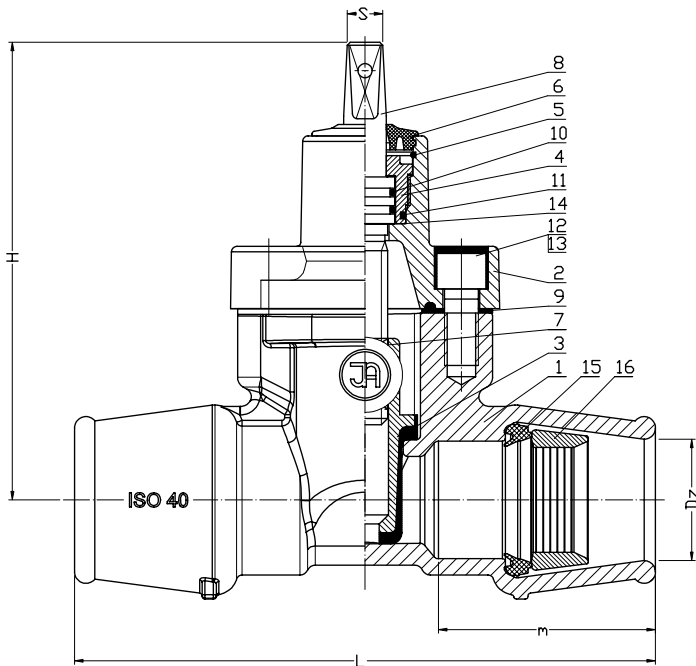
Acceptable



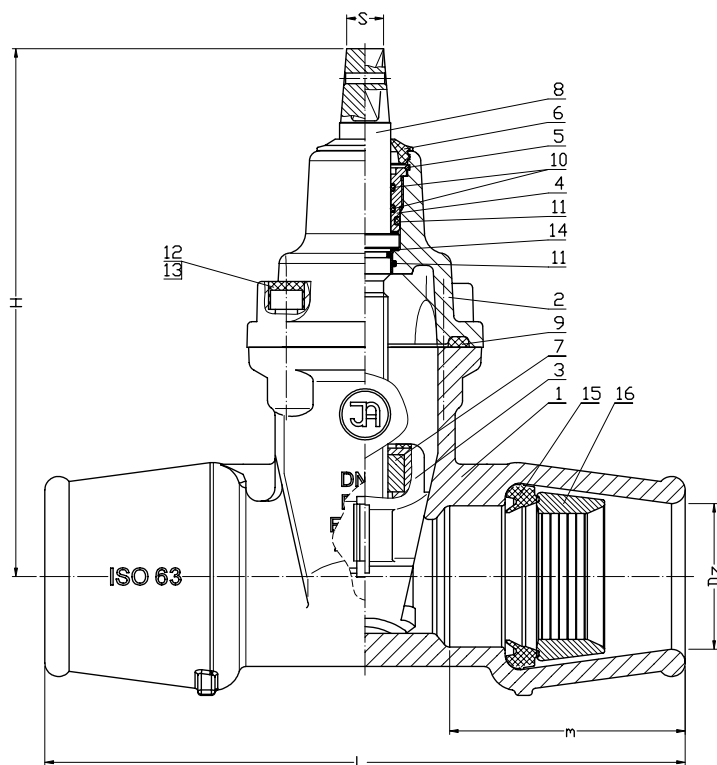
Non acceptable



For diameters DN20 - DN32



For diameters DN40 - DN50



No.	Part	Standard execution
1	Body	Ductile cast iron EN-GJS 400-15 EN-GJS 500-7(*) EN 1560
2	Bonnet	Ductile cast iron EN-GJS 400-15 EN-GJS 500-7(*) EN 1560
3	Wedge	Brass CW602N(DN20-DN32) EN 1412 Ductile cast iron(DN40-DN50) EN-GJS 400-15 EN 1560 Rubber EPDM, NBR(*) EN ISO 1629
	Wedge slider	Polyacetal POM-C EN ISO 29988-1
4	Packing cork	Brass CW602N EN 1412
5	Protection ring	Steel 1.4310 EN 10027-2
6	Cleaning gasket	Rubber EPDM, NBR(*), Oriplast(*) EN ISO 1629
7	Spindle nut	Brass CW6032N(DN40-DN50) EN 1412
8	Spindle	Stainless steel 1.4404 EN 10027-2
9	Body-bonnet gasket	Rubber EPDM, NBR(*) EN ISO 1629
10	O-ring	Rubber EPDM, NBR(*) EN ISO 1629
11	Screw	Stainless steel A4 EN ISO 4762
12	Screw stopper	Wax
13	Srew stopper	Wax
14	Washer	Polyacetal POM-C EN ISO 29988-1
15	Gasket	Rubber EPDM, NBR(*) EN ISO 1629
16	Tension ring	Polyacetal POM-C EN ISO 29988-1

(*) - other material variants on special request

DN	Dz	PN	H	L	m	S	Weight
[mm]	[mm]	[bar]	[mm]				[kg]
20	25	16	160	165	52	12	3
25	32	16	160	184	72	12	3,5
32	40	16	160	205	77	12	4,1
40	50	16	215	230	80	14	7
50	63	16	225	270	85	14	8,5

* during commissioning

We reserve the rights to modify the production program and the given data without separate notices due to the permanent company development.