



UNIFIX MINI

pages 170-171

Optimal and efficient repair system for sealing holes, cracks and porous areas in water pipes. Unifix Mini clamps are designed for steel, copper, cast iron, lead and stainless steel pipes, as well as for temporary repair of PE pipes, multilayer plastic pipes and PVC pipes. Mini clamps are available for pipes with an outer diameter of 21-93 mm and offer an installation length of 60 or 100 mm.



UNIFIX MIDDLE

pages 172-173

A series of sealing clamps that are suitable not only for sealing water pipes but also gas pipes. Unifix Middle clamps are available for pipes with an outer diameter of 118 mm and offer an installation length of 100 or 150 mm.



UNIFIX TAPPING SADDLE

pages 174-175

A very cost-effective solution for making branches. Both clamps and mounting bands with a width of 60 mm and a thickness of 1.5 mm are all made from stainless steel.



UNIFIX MAXI

pages 176-203

A standard, universal solution for various types of systems. Unifix Maxi clamps are used to seal and connect gas and water pipes made of steel, cast iron, ductile cast iron and fiber cement, and to repair PE and PVC pipes. Maxi clamps are available in one-, two- or three-part versions, with threaded or flange outlet. They have a full seal around their entire circumference. Unifix Maxi clamps are available in different lengths.



EASY GRIP

DO YOU KNOW THE EASY FUNCTION?

ALL PRODUCTS WITH THE EASY SYMBOL ARE EQUIPPED WITH EASY GRIP FUNCTION.

The Easy Grip function is an „installation aid“, which makes the installation of stainless steel clamps significantly easier and installation times significantly shorter.

The result are savings in time, costs and energy!

It works as follows:



Side supports in all Middle and Maxi clamps are fitted with hooks.



These hooks are designed for attaching a typical box wrench or open flat wrench.



Then everything is done on a leverage basis:

The lower edge of the clamp and the wrench should be squeezed with one hand, and then the movable fixing element can be conveniently placed on the upper edge of the stainless steel clamp.

Tighten the nuts and you're done!

NEVER BEFORE HAS THE INSTALLATION OF STAINLESS STEEL SEALING CLAMPS BEEN SO EASY!

UNIFIX MINI – SEALING CLAMPS OF STAINLESS STEEL

APPLICATION: for sealing holes, cracks and porous areas in water pipes.

DESIGNED FOR

STEEL PIPES | BOILER PIPES | STAINLESS STEEL PIPES | COPPER PIPES

and for temporary repairs in cold water systems:

PVC PIPES | PE PIPES | PLASTIC MULTILAYER PIPES

FEATURES OF UNIFIX-MINI CLAMPS:

- **Sealing of holes, cracks and porous areas in water pipes with a smooth surface.**
- The strong honeycomb structure of the seal (EPDM approved for drinking water systems) provides an improved compensation for pipe irregularities.
- Installation of the Mini clamp in a limited mounting space (7 mm is sufficient!) is easily feasible.
- **Pressure stages:** water PN 10, temperature: water up to 90°C
- Sealing clamp, bridge and screws of stainless steel.
- Sealing tape vulcanised over the entire surface.
- Extremely easy installation.
- **Two lengths of clamps: 60 mm (with one screw) or: 100 mm (with two screws).**



LENGTH 60 MM		
Length [m]	Pipe diameter [mm]	Code
60	21 – 25	51.01.021025.06
60	26 – 30	51.01.026030.06
60	33 – 37	51.01.033037.06
60	38 – 42	51.01.038042.06
60	42 – 45	51.01.042045.06
60	48 – 51	51.01.048051.06
60	55 – 58	51.01.055058.06
60	60 – 64	51.01.060064.06
60	69 – 73	51.01.069073.06
60	74 – 80	51.01.074080.06
60	87 – 93	51.01.087093.06

LENGTH 100 MM

Length [m]	Pipe diameter [mm]	Code
100	21 – 25	51.01.021025.10
100	26 – 30	51.01.026030.10
100	33 – 37	51.01.033037.10
100	42 – 45	51.01.042045.10
100	48 – 51	51.01.048051.10
100	55 – 58	51.01.055058.10
100	60 – 64	51.01.060064.10
100	69 – 73	51.01.069073.10
100	74 – 80	51.01.074080.10
100	87 – 93	51.01.087093.10



As standard, all products are fitted with EPDM sealing for drinking water. The NBR sealing for water and gas is available at no extra charge. In this case, the article codes start with 50.

ASSEMBLY INSTRUCTIONS FOR UNIFIX MINI

Stainless steel sealing clamps (lengths 60 and 100 mm)

PREPARATION:

1. Clean the pipe around the damaged area to remove dirt.
2. Make sure that the pipe outer diameter corresponds to the range for the respective sealing clamp.
3. The sealing and the pipe can be moistened with soapy water to increase the assembly efficiency.
4. Loosen the nuts on the screws to the end of the thread.

Assembly steps:



1. Move the stainless steel bridge upwards and open the clamp.



2. Put the sealing onto the pipe and reattach the stainless steel bridge. Make sure that the damaged area is covered with as much sealing as possible. (The distance between the outer edge of the damage and the outer edge of the sealing clamp must not be less than 2 cm on each side).

Note: You can also carry out the above steps next to the place to be repaired, and only then slide the assembled sealing clamp onto the damage.



3. Tighten the nuts evenly with a torque of approx. 20 Nm. After about 15-20 minutes, re-tighten the nuts, also with a torque of about 20 Nm. After the repair, a pressure test must be carried out.



UNIFIX MIDDLE – SEALING CLAMPS OF STAINLESS STEEL



APPLICATION: for sealing holes, cracks and porous areas in water pipes.

DESIGNED FOR

STEEL PIPES | BOILER PIPES | STAINLESS STEEL PIPES | COPPER PIPES

and for temporary repairs in cold water systems:

PVC PIPES | PE PIPES | PLASTIC MULTILAYER PIPES

FEATURES OF UNIFIX-MINI CLAMPS:

- **Designed to seal holes, cracks and porous areas in water and gas pipes** (note: gas pipes only outside buildings) with a smooth surface.
- **Pressure stages:** water PN 16, gas PN 4; temperatures: water up to 90°C, gas from -5 to +50°C.
- Sealing clamp, bridge and screws of stainless steel 1.4301 (V2A) – AISI 304.
- Sealing tape vulcanised over the entire surface.
- Screws with blue Teflon coating and caps for thread protection.
- The EPDM sealing tape approved for drinking water or NBR sealing tape for gas systems (DIN DVGW).
- **Clamps 100 mm long (with one screw) and 150 mm long (with two screws) are available.**

On request, clamps with threaded outlet are available!

UNIFIX MIDDLE – SEALING CLAMPS OF STAINLESS STEEL



UNIFIX MIDDLE, LENGTH 100 MM (WITH ONE SCREW)

Length [m]	Pipe diameter [mm]	Code
100	32 – 36	51.02.032036.10
100	40 – 44	51.02.040044.10
100	44 – 51	51.02.044051.10
100	48 – 55	51.02.048055.10
100	50 – 57	51.02.050057.10
100	52 – 59	51.02.052059.10
100	56 – 63	51.02.056063.10
100	58 – 65	51.02.058065.10
100	60 – 67	51.02.060067.10
100	75 – 83	51.02.075083.10
100	87 – 95	51.02.087095.10
100	108 – 118	51.02.108118.10

UNIFIX MIDDLE, LENGTH 150 MM (WITH TWO SCREWS)

Length [m]	Pipe diameter [mm]	Code
150	32 – 36	51.02.032036.15
150	40 – 44	51.02.040044.15
150	44 – 51	51.02.044051.15
150	48 – 55	51.02.048055.15
150	50 – 57	51.02.050057.15
150	52 – 59	51.02.052059.15
150	56 – 63	51.02.056063.15
150	58 – 65	51.02.058065.15
150	60 – 67	51.02.060067.15
150	75 – 83	51.02.075083.15
150	87 – 95	51.02.087095.15
150	108 – 118	51.02.108118.15



As standard, all products are fitted with EPDM sealing for drinking water. The NBR sealing for water and gas is available at no extra charge. In this case, the article codes start with 50.



UNIFIX TAPPING SADDLES

A cost-effective alternative for making branches!



FEATURES OF UNIFIX TAPPING SADDLES

- Designed for making branches of water and gas pipes (note: gas pipes only outside buildings).
- The tapping saddles are made of stainless steel 1.4301 (V2A) similar to AISI 304 and are available with EPDM sealing (for drinking water) or NBR sealing (for gas).
- The mounting bands are also made of stainless steel and lined inside with a smooth rubber collar. This prevents damage, particularly in plastic pipes and prevents the tapping saddle from slipping.

LENGTH: 125 MM AT BRANCHES UP TO 1 1/4"; 150 MM AT BRANCHES UP TO 1 1/2"

Length [m]	Thread size [inch]	Code
88 – 110 DN 80	1/2"	51.21.088110.12.1
	3/4"	51.21.088110.12.2
	1"	51.21.088110.12.3
	1 1/4"	51.21.088110.12.4
108 – 134 DN 100	1/2"	51.21.108134.12.1
	3/4"	51.21.108134.12.2
	1"	51.21.108134.12.3
	1 1/4"	51.21.108134.12.4
	1 1/2"	51.21.108134.12.5
	2"	51.21.108134.12.6
114 – 139 DN 125	1/2"	51.21.114139.12.1
	3/4"	51.21.114139.12.2
	1"	51.21.114139.12.3
	1 1/4"	51.21.114139.12.4

LENGTH: 125 MM AT BRANCHES UP TO 1 1/4"; 150 MM AT BRANCHES UP TO 1 1/2"

Length [m]	Thread size [inch]	Code
138 – 160 DN 150	1 1/2"	51.21.114139.12.5
	2"	51.21.114139.12.6
	1/2"	51.21.138160.15.1
	3/4"	51.21.138160.15.2
	1"	51.21.138160.15.3
	1 1/4"	51.21.138160.15.4
159 – 180 DN 175	1 1/2"	51.21.138160.15.5
	2"	51.21.138160.15.6
	1/2"	51.21.159180.15.1
	3/4"	51.21.159180.15.2
	1"	51.21.159180.15.3
	1 1/4"	51.21.159180.15.4
190 – 218 DN 200	1 1/2"	51.21.159180.15.5
	2"	51.21.159180.15.6
	1/2"	51.21.190218.15.1
	3/4"	51.21.190218.15.2
	1"	51.21.190218.15.3
	1 1/4"	51.21.190218.15.4
216 – 238 DN 225	1 1/2"	51.21.190218.15.5
	2"	51.21.190218.15.6
	1/2"	51.21.216238.15.1
	3/4"	51.21.216238.15.2
	1"	51.21.216238.15.3
	1 1/4"	51.21.216238.15.4
230 – 260 DN 250	1 1/2"	51.21.216238.15.5
	2"	51.21.216238.15.6
	1/2"	51.21.230260.15.1
	3/4"	51.21.230260.15.2
	1"	51.21.230260.15.3
	1 1/4"	51.21.230260.15.4
265 – 285 DN 275	1 1/2"	51.21.230260.15.5
	2"	51.21.230260.15.6
	1/2"	51.21.265285.15.1
	3/4"	51.21.265285.15.2
	1"	51.21.265285.15.3
	1 1/4"	51.21.265285.15.4
	1 1/2"	51.21.265285.15.5
	2"	51.21.265285.15.6

As standard, all products are fitted with EPDM sealing for drinking water. The NBR sealing for water and gas is available at no extra charge. In this case, the article codes start with 50.



UNIFIX MAXI

For repairing, sealing or connecting gas and water pipes.

The Maxi clamps are available in one- (Maxi 1), two- (Maxi 2) or three-part (Maxi 3) versions, with threaded or flange outlet.

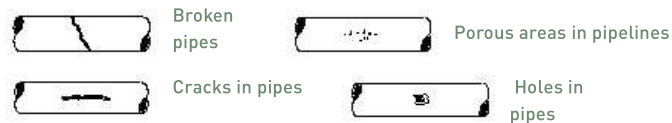
DESIGNED FOR

STEEL PIPES | CAST IRON PIPES | DUCTILE CAST IRON PIPES | FIBRE-CEMENT PIPES

and

PE PIPES | PVC PIPES | COLD WATER SYSTEMS

Unifix Maxi clamps can be used in the case of the following damage or installation situations:



FEATURES OF UNIFIX MAXI CLAMPS

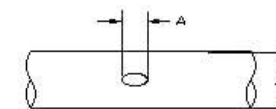
- **Designed for sealing and connecting water or gas pipes (note: gas pipes only outside buildings).**
- **Our sealing clamps are 100% made of 1.4301 (V2A) stainless steel** - similar to AISI 304, and are suitable for quick and permanent repairs of cracked, perforated or porous pipes. For applications that require higher overall strength (wastewater treatment plants, chemical industry, laboratories, increased chloride content) we offer Maxi clamps made of stainless steel V4A - AISI316.
- **The screws** are welded to the clamp, so only the stainless steel bridge is movable. Thus, there is no need to disconnect any elements of the clamp during its installation. This prevents any part of the clamp from getting lost during assembly work.
- Welding required for the manufacturing of the clamps is carried out automatically in order to consistently ensure high precision and quality (welding in accordance with EN15614-1). After welding, the clamps are passivated to protect them against corrosion.
- **The screws** are covered with Teflon. This guarantees a lifelong product durability.
- **The nuts** are passivated in yellow to ensure that they can rotate freely on the screw thread.
- The mounting range is embossed on the sealing clamp and thus legible for many years after its installation.
- As standard, all products are fitted with an EPDM (drinking water) sealing (sealing tape), but can be supplied with an NBR (water and gas) sealing tape or a Viton sealing on request.
- Regular tests ensure the high quality of the GEBO Unifix series.

SELECTING THE RIGHT MAXI CLAMP WITH THE RIGHT LENGT

In the following is an overview of the dimensions for which you can use Maxi clamps in one-, two- or three-part versions.

Pipe outer diameter [mm]	Maxi 1 (one-part)	Maxi 2 (two-part)	Maxi 3 (three-part)
48-87	X		
88-269	X	X	
270-350	X	X	X
351-835		X	X
836-970			X

To determine the correct length of the sealing clamp, add the damage size (A) and the pipe diameter (B). In the case of PE pipes, add 50% of their value to the sum obtained.



TEMPERATURES: Water up to 90°C, gas from -5 to +50°C

PRESSURE STAGES:

The permissible pressure stages vary depending on the type of pipe, its outer diameter, type of damage and the use of one-part or multi-part sealing clamp. The following values should be taken as a basis:

Pipe outer diameter [mm]	Pressure stage [bar]	
	Water	Gas
MAXI 1 (one-part clamp)		
48-102	16	5
106-230	16	4
237-350	10	3

Pipe outer diameter [mm]	Pressure stage [bar]	
	Water	Gas
MAXI 2 (two-part clamp)		
88-282	16	4
295-510	10	3
510-530	6	-

Pipe outer diameter [mm]	Pressure stage [bar]	
	Water	Gas
MAXI 3 (three-part clamp)		
270-460	10	3
475-630	6	2

Pipe outer diameter [mm]	Pressure stage [bar]	
	Water	Gas
MAXI 3 (three-part clamp)		
654-780	4	-
813-1000	2	-

LENGTH / SCREWS:

Length [mm]	Number of screws
150	2
200	2
300	3
400	4
500	5

Length [mm]	Number of screws
600	6
700	7
800	8
900	9
1000	10



MAXI 1 - ONE-PART STAINLESS STEEL SEALING CLAMP



LENGTH: 150 M, WITH TWO SCREWS



DN	Length [mm]	Pipe diameter [mm]	Code
40	150	48 – 55	51.03.048055.15
	150	52 – 59	51.03.052059.15
50	150	60 – 67	51.03.060067.15
	150	67 – 74	51.03.067074.15
65	150	70 – 77	51.03.070077.15
	150	73 – 80	51.03.073080.15
	150	76 – 85	51.03.076085.15
	150	82 – 90	51.03.082090.15
80	150	87 – 95	51.03.087095.15
	150	90 – 98	51.03.090098.15
	150	95 – 105	51.03.095105.15
	150	98 – 108	51.03.098108.15
	150	102 – 112	51.03.102112.15
100	150	106 – 116	51.03.106116.15
	150	108 – 118	51.03.108118.15
	150	113 – 123	51.03.113123.15
	150	118 – 128	51.03.118128.15
	150	120 – 131	51.03.120131.15
125	150	125 – 135	51.03.125135.15
	150	132 – 144	51.03.132144.15
	150	135 – 145	51.03.135145.15
150	150	140 – 152	51.03.140152.15
	150	151 – 161	51.03.151161.15
	150	159 – 170	51.03.159170.15
	150	165 – 176	51.03.165176.15
	150	167 – 177	51.03.167177.15
150	170 – 182	51.03.170182.15	

MAXI 1 - ONE-PART STAINLESS STEEL SEALING CLAMP



LENGTH: 200M, WITH TWO SCREWS



DN	Length [mm]	Pipe diameter [mm]	Code
40	200	48 – 55	51.03.048055.20
	200	52 – 59	51.03.052059.20
50	200	60 – 67	51.03.060067.20
	200	67 – 74	51.03.067074.20
65	200	70 – 77	51.03.070077.20
	200	73 – 80	51.03.073080.20
	200	76 – 85	51.03.076085.20
	200	82 – 90	51.03.082090.20
80	200	87 – 95	51.03.087095.20
	200	90 – 98	51.03.090098.20
	200	95 – 105	51.03.095105.20
	200	98 – 108	51.03.098108.20
	200	102 – 112	51.03.102112.20
100	200	106 – 116	51.03.106116.20
	200	108 – 118	51.03.108118.20
	200	113 – 123	51.03.113123.20
	200	118 – 128	51.03.118128.20
	200	120 – 131	51.03.120131.20
125	200	125 – 135	51.03.125135.20
	200	132 – 144	51.03.132144.20
	200	135 – 145	51.03.135145.20
150	200	140 – 152	51.03.140152.20
	200	151 – 161	51.03.151161.20
	200	159 – 170	51.03.159170.20
	200	165 – 176	51.03.165176.20
	200	167 – 177	51.03.167177.20
175	200	170 – 182	51.03.170182.20
	200	174 – 184	51.03.174184.20
	200	176 – 186	51.03.176186.20
	200	180 – 191	51.03.180191.20
	200	186 – 196	51.03.186196.20
200	200	193 – 203	51.03.193203.20
	200	200 – 212	51.03.200212.20
	200	209 – 220	51.03.209220.20
200	200	215 – 225	51.03.215225.20
	200	219 – 230	51.03.219230.20



As standard, all products are fitted with EPDM sealing for drinking water. The NBR sealing for water and gas is available at no extra charge. In this case, the article codes start with 50.



MAXI 1 - ONE-PART STAINLESS STEEL SEALING CLAMP



LENGTH: 300 M, WITH THREE SCREWS



DN	Length [mm]	Pipe diameter [mm]	Code
50	300	60 – 67	51.03.060067.30
	300	67 – 74	51.03.067074.30
65	300	70 – 77	51.03.070077.30
	300	73 – 80	51.03.073080.30
	300	76 – 85	51.03.076085.30
	300	82 – 90	51.03.082090.30
80	300	87 – 95	51.03.087095.30
	300	90 – 98	51.03.090098.30
	300	95 – 105	51.03.095105.30
	300	98 – 108	51.03.098108.30
	300	102 – 112	51.03.102112.30
	300	106 – 116	51.03.106116.30
100	300	108 – 118	51.03.108118.30
	300	113 – 123	51.03.113123.30
	300	118 – 128	51.03.118128.30
	300	120 – 131	51.03.120131.30
	300	125 – 135	51.03.125135.30
125	300	132 – 144	51.03.132144.30
	300	135 – 145	51.03.135145.30
	300	140 – 152	51.03.140152.30
	150	300	151 – 161
300		159 – 170	51.03.159170.30
300		165 – 176	51.03.165176.30
300		167 – 177	51.03.167177.30
300		170 – 182	51.03.170182.30
300		174 – 184	51.03.174184.30
300		176 – 186	51.03.176186.30
175	300	180 – 191	51.03.180191.30
	300	186 – 196	51.03.186196.30
	300	193 – 203	51.03.193203.30
	300	200 – 212	51.03.200212.30
200	300	209 – 220	51.03.209220.30
	300	215 – 225	51.03.215225.30
	300	219 – 230	51.03.219230.30
	300	222 – 233	51.03.222233.30
	300	228 – 240	51.03.228240.30
	300	232 – 242	51.03.232242.30
	300	237 – 247	51.03.237247.30
	300	239 – 249	51.03.239249.30
	300	243 – 253	51.03.243253.30
	300	250 – 260	51.03.250260.30
	300	252 – 262	51.03.252262.30
	300	261 – 271	51.03.261271.30
	300	266 – 276	51.03.266276.30
250	300	270 – 280	51.03.270280.30
	300	273 – 284	51.03.273284.30
	300	280 – 293	51.03.280293.30
	300	290 – 300	51.03.290300.30
	300	300 – 310	51.03.300310.30
	300	310 – 320	51.03.310320.30

MAXI 1 - ONE-PART STAINLESS STEEL SEALING CLAMP



LENGTH: 400M, WITH FOUR SCREWS



DN	Length [mm]	Pipe diameter [mm]	Code	
65	400	73 – 80	51.03.073080.40	
	400	76 – 85	51.03.076085.40	
	400	82 – 90	51.03.082090.40	
80	400	87 – 95	51.03.087095.40	
	400	90 – 98	51.03.090098.40	
	400	95 – 105	51.03.095105.40	
	400	98 – 108	51.03.098108.40	
	400	102 – 112	51.03.102112.40	
100	400	106 – 116	51.03.106116.40	
	400	108 – 118	51.03.108118.40	
	400	113 – 123	51.03.113123.40	
	400	118 – 128	51.03.118128.40	
	400	120 – 131	51.03.120131.40	
	400	125 – 135	51.03.125135.40	
125	400	132 – 144	51.03.132144.40	
	400	135 – 145	51.03.135145.40	
	400	140 – 152	51.03.140152.40	
	150	400	151 – 161	51.03.151161.40
400		159 – 170	51.03.159170.40	
400		165 – 176	51.03.165176.40	
400		167 – 177	51.03.167177.40	
400		170 – 182	51.03.170182.40	
400		174 – 184	51.03.174184.40	
400		176 – 186	51.03.176186.40	
175	400	180 – 191	51.03.180191.40	
	400	186 – 196	51.03.186196.40	
	400	193 – 203	51.03.193203.40	
	400	200 – 212	51.03.200212.40	
	200	400	209 – 220	51.03.209220.40
400		215 – 225	51.03.215225.40	
400		219 – 230	51.03.219230.40	
400		222 – 233	51.03.222233.40	
400		228 – 240	51.03.228240.40	
400		232 – 242	51.03.232242.40	
400		237 – 247	51.03.237247.40	
400		239 – 249	51.03.239249.40	
400		243 – 253	51.03.243253.40	
400		250 – 260	51.03.250260.40	
400		252 – 262	51.03.252262.40	
400		261 – 271	51.03.261271.40	
400		266 – 276	51.03.266276.40	
250	400	270 – 280	51.03.270280.40	
	400	273 – 284	51.03.273284.40	
	400	280 – 293	51.03.280293.40	
	400	290 – 300	51.03.290300.40	
	400	300 – 310	51.03.300310.40	
	400	310 – 320	51.03.310320.40	
	300	400	315 – 326	51.03.315326.40
		400	320 – 330	51.03.320330.40
400		325 – 335	51.03.325335.40	
400		334 – 346	51.03.334346.40	
400		340 – 350	51.03.340350.40	
400	350 – 360	51.03.350360.40		



As standard, all products are fitted with EPDM sealing for drinking water. The NBR seating for water and gas is available at no extra charge. In this case, the article codes start with 50.



MAXI 1 - ONE-PART STAINLESS STEEL SEALING CLAMP



LENGTH: 500 M, WITH FIVE SCREWS



DN	Length [mm]	Pipe diameter [mm]	Code	
100	500	108 – 118	51.03.108118.50	
	500	113 – 123	51.03.113123.50	
	500	118 – 128	51.03.118128.50	
	500	120 – 131	51.03.120131.50	
	500	125 – 135	51.03.125135.50	
125	500	132 – 144	51.03.132144.50	
	500	135 – 145	51.03.135145.50	
	500	140 – 152	51.03.140152.50	
150	500	151 – 161	51.03.151161.50	
	500	159 – 170	51.03.159170.50	
	500	165 – 176	51.03.165176.50	
	500	167 – 177	51.03.167177.50	
	500	170 – 182	51.03.170182.50	
	500	174 – 184	51.03.174184.50	
	500	176 – 186	51.03.176186.50	
	500	180 – 191	51.03.180191.50	
	500	186 – 196	51.03.186196.50	
175	500	193 – 203	51.03.193203.50	
	500	200 – 212	51.03.200212.50	
	500	209 – 220	51.03.209220.50	
200	500	215 – 225	51.03.215225.50	
	500	219 – 230	51.03.219230.50	
	500	222 – 233	51.03.222233.50	
	500	228 – 240	51.03.228240.50	
	500	232 – 242	51.03.232242.50	
	500	237 – 247	51.03.237247.50	
	500	239 – 249	51.03.239249.50	
	500	243 – 253	51.03.243253.50	
	500	250 – 260	51.03.250260.50	
	500	252 – 262	51.03.252262.50	
	500	261 – 271	51.03.261271.50	
	500	266 – 276	51.03.266276.50	
	250	500	270 – 280	51.03.270280.50
		500	273 – 284	51.03.273284.50
		500	280 – 293	51.03.280293.50
500		290 – 300	51.03.290300.50	
500		300 – 310	51.03.300310.50	
300	500	310 – 320	51.03.310320.50	
	500	315 – 326	51.03.315326.50	
	500	320 – 330	51.03.320330.50	
	500	325 – 335	51.03.325335.50	
	500	334 – 346	51.03.334346.50	
	500	340 – 350	51.03.340350.50	
	500	350 – 360	51.03.350360.50	

MAXI 1 - ONE-PART STAINLESS STEEL SEALING CLAMP



LENGTH: 600M, WITH SIX SCREWS



DN	Length [mm]	Pipe diameter [mm]	Code	
200	600	215 – 225	51.03.215225.60	
	600	219 – 230	51.03.219230.60	
	600	222 – 233	51.03.222233.60	
	600	228 – 240	51.03.228240.60	
	600	232 – 242	51.03.232242.60	
	600	237 – 247	51.03.237247.60	
	600	239 – 249	51.03.239249.60	
	600	243 – 253	51.03.243253.60	
	600	250 – 260	51.03.250260.60	
	600	252 – 262	51.03.252262.60	
	600	261 – 271	51.03.261271.60	
	600	266 – 276	51.03.266276.60	
	250	600	270 – 280	51.03.270280.60
		600	273 – 284	51.03.273284.60
		600	280 – 293	51.03.280293.60
600		290 – 300	51.03.290300.60	
600		300 – 310	51.03.300310.60	
300	600	310 – 320	51.03.310320.60	
	600	315 – 326	51.03.315326.60	
	600	320 – 330	51.03.320330.60	
	600	325 – 335	51.03.325335.60	
	600	334 – 346	51.03.334346.60	
	600	340 – 350	51.03.340350.60	
	600	350 – 360	51.03.350360.60	

As standard, all products are fitted with EPDM sealing for drinking water. The NBR sealing for water and gas is available at no extra charge. In this case, the article codes start with 50.





MAXI 2 - TWO-PART STAINLESS STEEL SEALING CLAMP


EASY GRIP

LENGTH: 200 M, WITH TWO SCREWS



DN	Length [mm]	Pipe diameter [mm]	Code
80	200	88 – 110	51.04.088110.20
	200	100 – 120	51.04.100120.20
100	200	108 – 128	51.04.108128.20
	200	112 – 134	51.04.112134.20
	200	120 – 140	51.04.120140.20
125	200	133 – 156	51.04.133156.20
	200	138 – 160	51.04.138160.20
150	200	158 – 180	51.04.158180.20
	200	165 – 185	51.04.165185.20
	200	168 – 190	51.04.168190.20
	200	176 – 196	51.04.176196.20
175	200	190 – 210	51.04.190210.20
	200	195 – 217	51.04.195217.20
200	200	210 – 230	51.04.210230.20
	200	216 – 238	51.04.216238.20
	200	225 – 246	51.04.225246.20
	200	230 – 250	51.04.230250.20

LENGTH: 300 M, WITH THREE SCREWS




DN	Length [mm]	Pipe diameter [mm]	Code
80	300	88 – 110	51.04.088110.30
	300	100 – 120	51.04.100120.30
100	300	108 – 128	51.04.108128.30
	300	112 – 134	51.04.112134.30
	300	120 – 140	51.04.120140.30
125	300	133 – 156	51.04.133156.30
	300	138 – 160	51.04.138160.30
	300	158 – 180	51.04.158180.30
150	300	165 – 185	51.04.165185.30
	300	168 – 190	51.04.168190.30
	300	176 – 196	51.04.176196.30
	300	190 – 210	51.04.190210.30
175	300	195 – 217	51.04.195217.30
	300	210 – 230	51.04.210230.30
	300	216 – 238	51.04.216238.30
200	300	225 – 246	51.04.225246.30
	300	230 – 250	51.04.230250.30
	300	238 – 260	51.04.238260.30
	300	250 – 271	51.04.250271.30
	300	269 – 289	51.04.269289.30
	300	273 – 293	51.04.273293.30
	300	282 – 302	51.04.282302.30
	300	295 – 315	51.04.295315.30

MAXI 2 - TWO-PART STAINLESS STEEL SEALING CLAMP


EASY GRIP

LENGTH: 300 M, WITH THREE SCREWS



DN	Length [mm]	Pipe diameter [mm]	Code
300	300	314 – 335	51.04.314335.30
	300	322 – 344	51.04.322344.30
	300	337 – 358	51.04.337358.30
350	300	347 – 368	51.04.347368.30
	300	365 – 385	51.04.365385.30

LENGTH: 400 M, WITH FOUR SCREWS



DN	Length [mm]	Pipe diameter [mm]	Code
80	400	88 – 110	51.04.088110.40
	400	100 – 120	51.04.100120.40
100	400	108 – 128	51.04.108128.40
	400	112 – 134	51.04.112134.40
	400	120 – 140	51.04.120140.40
125	400	133 – 156	51.04.133156.40
	400	138 – 160	51.04.138160.40
150	400	158 – 180	51.04.158180.40
	400	165 – 185	51.04.165185.40
	400	168 – 190	51.04.168190.40
	400	176 – 196	51.04.176196.40
175	400	190 – 210	51.04.190210.40
	400	195 – 217	51.04.195217.40
	400	210 – 230	51.04.210230.40
200	400	216 – 238	51.04.216238.40
	400	225 – 246	51.04.225246.40
	400	230 – 250	51.04.230250.40
	400	238 – 260	51.04.238260.40
	400	250 – 271	51.04.250271.40
	400	269 – 289	51.04.269289.40
	400	273 – 293	51.04.273293.40
	400	282 – 302	51.04.282302.40
300	400	295 – 315	51.04.295315.40
	400	314 – 335	51.04.314335.40
	400	322 – 344	51.04.322344.40
350	400	337 – 358	51.04.337358.40
	400	347 – 368	51.04.347368.40
	400	365 – 385	51.04.365385.40
	400	382 – 402	51.04.382402.40
400	400	396 – 420	51.04.396420.40
	400	410 – 430	51.04.410430.40
	400	420 – 440	51.04.420440.40

As standard, all products are fitted with EPDM sealing for drinking water. The NBR sealing for water and gas is available at no extra charge. In this case, the article codes start with 50.



MAXI 2 - TWO-PART STAINLESS STEEL SEALING CLAMP



LENGTH: 500 M, WITH FIVE SCREWS



DN	Length [mm]	Pipe diameter [mm]	Code
80	500	88 – 110	51.04.088110.50
	500	100 – 120	51.04.100120.50
100	500	108 – 128	51.04.108128.50
	500	112 – 134	51.04.112134.50
	500	120 – 140	51.04.120140.50
125	500	133 – 156	51.04.133156.50
	500	138 – 160	51.04.138160.50
150	500	158 – 180	51.04.158180.50
	500	165 – 185	51.04.165185.50
	500	168 – 190	51.04.168190.50
	500	176 – 196	51.04.176196.50
175	500	190 – 210	51.04.190210.50
	500	195 – 217	51.04.195217.50
200	500	210 – 230	51.04.210230.50
	500	216 – 238	51.04.216238.50
	500	225 – 246	51.04.225246.50
	500	230 – 250	51.04.230250.50
	500	238 – 260	51.04.238260.50
	500	250 – 271	51.04.250271.50
250	500	269 – 289	51.04.269289.50
	500	273 – 293	51.04.273293.50
	500	282 – 302	51.04.282302.50
300	500	295 – 315	51.04.295315.50
	500	314 – 335	51.04.314335.50
	500	322 – 344	51.04.322344.50
350	500	337 – 358	51.04.337358.50
	500	347 – 368	51.04.347368.50
	500	365 – 385	51.04.365385.50
400	500	382 – 402	51.04.382402.50
	500	396 – 420	51.04.396420.50
	500	410 – 430	51.04.410430.50
	500	420 – 440	51.04.420440.50
450	500	435 – 455	51.04.435455.50
	500	450 – 470	51.04.450470.50
	500	457 – 477	51.04.457477.50
500	500	485 – 508	51.04.485508.50
	500	510 – 530	51.04.510530.50

MAXI 2 - TWO-PART STAINLESS STEEL SEALING CLAMP



LENGTH: 600 M, WITH SIX SCREWS



DN	Length [mm]	Pipe diameter [mm]	Code
300	600	314 – 335	51.04.314335.60
	600	322 – 344	51.04.322344.60
	600	337 – 358	51.04.337358.60
350	600	347 – 368	51.04.347368.60
	600	365 – 385	51.04.365385.60
	600	382 – 402	51.04.382402.60
	600	396 – 420	51.04.396420.60
400	600	410 – 430	51.04.410430.60
	600	420 – 440	51.04.420440.60
	600	435 – 455	51.04.435455.60
	600	450 – 470	51.04.450470.60
450	600	457 – 477	51.04.457477.60
	600	485 – 508	51.04.485508.60
500	600	510 – 530	51.04.510530.60

As standard, all products are fitted with EPDM sealing for drinking water. The NBR sealing for water and gas is available at no extra charge. In this case, the article codes start with 50.





MAXI 3 - THREE-PART STAINLESS STEEL SEALING CLAMP

EASY GRIP

LENGTH: 300 M, WITH THREE SCREWS



DN	Length [mm]	Pipe diameter [mm]	Code
250	300	270 – 300	51.05.270300.30
300	300	310 – 340	51.05.310340.30
	300	335 – 365	51.05.335365.30
	300	340 – 370	51.05.340370.30
350	300	360 – 390	51.05.360390.30
	300	385 – 415	51.05.385415.30
	300	395 – 425	51.05.395425.30
400	300	400 – 430	51.05.400430.30
	300	410 – 440	51.05.410440.30
	300	430 – 460	51.05.430460.30
	300	435 – 465	51.05.435465.30
450	300	440 – 470	51.05.440470.30
	300	460 – 490	51.05.460490.30

LENGTH: 400 M, WITH FOUR SCREWS



DN	Length [mm]	Pipe diameter [mm]	Code
250	400	270 – 300	51.05.270300.40
300	400	310 – 340	51.05.310340.40
	400	335 – 365	51.05.335365.40
350	400	340 – 370	51.05.340370.40
	400	360 – 390	51.05.360390.40
	400	385 – 415	51.05.385415.40
400	400	395 – 425	51.05.395425.40
	400	400 – 430	51.05.400430.40
	400	410 – 440	51.05.410440.40
	400	430 – 460	51.05.430460.40
450	400	435 – 465	51.05.435465.40
	400	440 – 470	51.05.440470.40
	400	460 – 490	51.05.460490.40
500	400	475 – 505	51.05.475505.40
	400	485 – 515	51.05.485515.40

MAXI 3 - THREE-PART STAINLESS STEEL SEALING CLAMP

EASY GRIP

LENGTH: 500 M, WITH FIVE SCREWS



DN	Length [mm]	Pipe diameter [mm]	Code
350	500	360 – 390	51.05.360390.50
	500	385 – 415	51.05.385415.50
	500	395 – 425	51.05.395425.50
400	500	400 – 430	51.05.400430.50
	500	410 – 440	51.05.410440.50
	500	430 – 460	51.05.430460.50
	500	435 – 465	51.05.435465.50
450	500	440 – 470	51.05.440470.50
	500	460 – 490	51.05.460490.50
	500	475 – 505	51.05.475505.50
500	500	485 – 515	51.05.485515.50
	500	510 – 540	51.05.510540.50
	500	530 – 560	51.05.530560.50

LENGTH: 600 M, WITH SIX SCREWS



DN	Length [mm]	Pipe diameter [mm]	Code	
400	600	435 – 465	51.05.435465.60	
450	600	440 – 470	51.05.440470.60	
	600	460 – 490	51.05.460490.60	
	600	475 – 505	51.05.475505.60	
500	600	485 – 515	51.05.485515.60	
	600	510 – 540	51.05.510540.60	
	600	530 – 560	51.05.530560.60	
	600	535 – 565	51.05.535565.60	
	600	555 – 585	51.05.555585.60	
	600	570 – 600	51.05.570600.60	
600	600	585 – 615	51.05.585615.60	
	600	610 – 640	51.05.610640.60	
	600	620 – 650	51.05.620650.60	
	600	630 – 660	51.05.630660.60	
600	600	654 – 684	51.05.654684.60	
	700	600	702 – 732	51.05.702732.60
	600	711 – 741	51.05.711741.60	
750	600	747 – 777	51.05.747777.60	
	600	780 – 810	51.05.780810.60	
800	600	813 – 843	51.05.813843.60	
	600	852 – 882	51.05.852882.60	
	600	864 – 894	51.05.864894.60	
900	600	900 – 930	51.05.900930.60	
	600	925 – 955	51.05.925955.60	
	600	945 – 975	51.05.945975.60	
	600	970 – 1000	51.05.9701000.60	

As standard, all products are fitted with EPDM sealing for drinking water. The NBR sealing for water and gas is available at no extra charge. In this case, the article codes start with 50.



MAXI 3 - THREE-PART STAINLESS STEEL SEALING CLAMP



LENGTH: 700 MM, WITH SEVEN SCREWS



DN	Length [mm]	Pipe diameter [mm]	Code
400	700	435 - 465	51.05.435465.70
	700	440 - 470	51.05.440470.70
		460 - 490	51.05.460490.70
500	700	475 - 505	51.05.475505.70
		485 - 515	51.05.485515.70
	700	510 - 540	51.05.510540.70
	700	530 - 560	51.05.530560.70
	700	535 - 565	51.05.535565.70
600	700	555 - 585	51.05.555585.70
		570 - 600	51.05.570600.70
	700	585 - 615	51.05.585615.70
		610 - 640	51.05.610640.70
600	700	620 - 650	51.05.620650.70
		630 - 660	51.05.630660.70
	700	654 - 684	51.05.654684.70
700	700	702 - 732	51.05.702732.70
	700	711 - 741	51.05.711741.70
750	700	747 - 777	51.05.747777.70
	700	780 - 810	51.05.780810.70
800	700	813 - 843	51.05.813843.70
		852 - 882	51.05.852882.70
	700	864 - 894	51.05.864894.70
900	700	900 - 930	51.05.900930.70
		925 - 955	51.05.925955.70
	700	945 - 975	51.05.945975.70
		700	970 - 1000

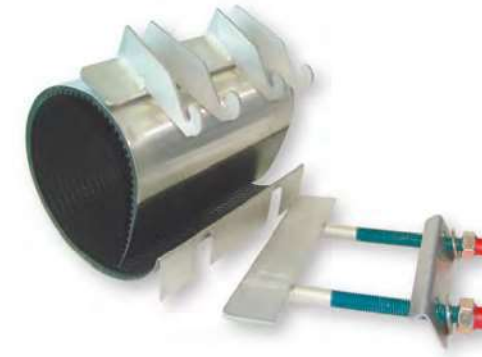
As standard, all products are fitted with EPDM sealing for drinking water. The NBR sealing for water and gas is available at no extra charge. In this case, the article codes start with 50.

UNIFIX MAXI CLAMP – SLIM VERSION



All Maxi clamps are also available in the following special versions - the SLIM version.

The Slim version is a perfect solution for places where there is not enough space for repair.



SLIM VERSION - FEATURES

Do you have problems with lack of space during installation?

Using the Maxi clamp in the Slim version, you can simply detach the plate with the fixing screws, so that a gap of only 10 mm is required for installation.





UNIFIX MAXI - UNIFIX MAXI CLAMPS WITH DIFFERENT TYPES OF OUTLETS



One-, two- or three-part Maxi clamps are available in versions with different outlets:

- with female thread,
- with male thread,
- with flange connection



TECHNICAL SPECIFICATIONS: UNIFIX MAXI WITH THREADED OUTLET

SEALING CLAMP: stainless steel 1.4301 (V2A) – AISI 304

SCREWS: stainless steel 1.4301 (V2A) – AISI 304; dimensions – depending on the diameter – M12, M14 or M16.

NUTS: stainless steel 1.4301 (V2A) – AISI 304; sizes: M12, M14 or M16.

Passivated in yellow, which guarantees the correct rotation on the screw thread.

BRIDGE: stainless steel 1.4301 (V2A) – AISI 304

BRIDGE PLATE: stainless steel 1.4301 (V2A) – AISI

304. The bridge plate is vulcanised into the sealing.

SEALING: As standard, EPDM sealing (for water) is used, alternatively NBR sealing is provided (for gas). The sealing features a honeycombed structure and ensures optimal sealing together with the O-ring seal at the outlet.

After welding, all stainless steel parts are passivated in order to achieve a high degree of protection against corrosion.

All products are also available in stainless steel V4A - AISI 316.

UNIFIX MAXI - UNIFIX MAXI CLAMPS WITH DIFFERENT TYPES OF OUTLETS



THREADED OUTLET:

Female thread:	1/2"	3/4"	1"	1 1/4"	1 1/2"	2"	2 1/2"	3"	4"
Male thread:	2 1/2"	3"							
Female / male thread:	2" F		2 1/2" M						

MINIMUM DIMENSIONS IN THE CASE OF THREADED OUTLETS:

Threaded connector	Middle respectively Maxi 1*	Installation length [mm]	Maxi 2	
	Pipe outer diameter [mm]		Pipe outer diameter [mm]	Installation length [mm]
1/2"	40 – 44	150	88–110	200
3/4"	48 – 55	150	88–110	200
1"	67 – 74	150	88–110	200
1 1/4"	82 – 89	150	88–110	200
1 1/2"	95 – 105	150	88–110	200
2"	95 – 105	150	88–110	200
2 1/2"	108 – 118	300	108–128	300
3"	–	–	108–128	400
4"	–	–	133–153	400

*** Important: for products with a threaded outlet:**

For pipes with an external diameter of less than 65 mm (length: 15 mm), it is recommended to use the Unifix Middle type, for larger than 65 mm: Unifix Maxi.



UNIFIX MAXI - UNIFIX MAXI CLAMPS WITH DIFFERENT TYPES OF OUTLETS



TECHNICAL SPECIFICATIONS: UNIFIX MAXI WITH FLANGE CONNECTION

The flange version is only available for our two- or three-part Maxi clamps and fits ranges from 88–110 mm to 768–798 mm. The installation lengths are optionally 300, 400, 500, 600, 800 and 1000 mm.

MATERIALS:

The materials are the same as for Maxi clamps with a threaded outlet with the following addition:

Information about the welded flange: stainless steel 1.4301 (V2A) - AISI 304, WIG welding (tungsten electrode in inert gas) on the inner and outer sides to ensure full welding of the outer body and flange. The minimum outlet height is about 120 mm for flanges DN150 and about 150 mm for flanges DN200-DN300.

FLANGE CONNECTION: stainless steel 1.4301 (V2A) - AISI 304; flanges according to DIN EN 1092-1 (formerly DIN 2576), from DN50 to DN300.

After welding, stainless steel parts are passivated in order to achieve a high degree of protection against corrosion.

All products are also available in stainless steel V4A - AISI 316.

As standard, UNIFIX MAXI clamps are supplied from the outer pipe diameter: 545 mm.

A version with the screws facing downwards is also possible.

PRESSURE STAGES vary depending on the outer diameter of the pipes, materials used and the flange version.

UNIFIX MAXI 2 WITH FLANGE CONNECTION



PRESSURE TABLE

Pipe outer diameter [mm]	Pressure stage [bar]	
	Water	Gas
88–210	16	4
216–410	10	3
420–798	6	2

UNIFIX MAXI 2 WITH FLANGE CONNECTION:

Flange size in combination with pipe outer diameter and installation length

Flange	Pipe outer Ø [mm]	Length	Flange adapter
DN 50	88 – 110	300	PN 10/16
DN 65	88 – 110	300	PN 10/16
DN 80 PLUS	88 – 110	400	PN 10/16
DN 80	108 – 128	400	PN 10/16
DN 100 PLUS	108 – 128	400	PN 10/16
DN 100	133 – 153	400	PN 10/16
DN 125	135 – 155	400	PN 10/16
DN 150 PLUS	158 – 180	400	PN 10/16
DN 150	169 – 189	400	PN 10/16
DN 200 PLUS	210 – 230	500	PN 10
DN 200, 8 holes	240 – 260	500	PN 10
DN 200, 12 holes	240 – 260	500	PN 16
DN 250 PLUS	240 – 260	600	PN 10
DN 250	315 – 325	600	PN 10
DN 300	To order		

PLUS = contains a stainless steel reduction piece for a smaller DN size.





EASY GRIP

UNIFIX MAXI 2 WITH FLANGE CONNECTION

DN	Pipe outer Ø [mm]	Length [m]					
		300	400	500	600	800	1000
80	88-110	X	X	X	X		
	100-120	X	X	X	X		
100	108-128	X	X	X	X		
	114-134	X	X	X	X		
	120-140	X	X	X	X		
125	130-150	X	X	X	X		
	133-155	X	X	X	X		
	135-155	X	X	X	X		
150	140-160	X	X	X	X		
	158-180	X	X	X	X		
	165-185	X	X	X	X		
175	168-189	X	X	X	X		
	170-190	X	X	X	X		
	176-196	X	X	X	X		
	180-200	X	X	X	X		
200	190-210	X	X	X	X		
	195-217	X	X	X	X		
	205-225	X	X	X	X		
225	210-230	X	X	X	X		
	216-238	X	X	X	X		
	225-246	X	X	X	X		
	230-250	X	X	X	X		
	240-260	X	X	X	X		
250	252-272	X	X	X	X		
	260-280	X	X	X	X		
	269-289	X	X	X	X		
250	273-293	X	X	X	X		
	282-302	X	X	X	X		
	295-315	X	X	X	X		

EASY GRIP

UNIFIX MAXI 2 WITH FLANGE CONNECTION

DN	Pipe outer Ø [mm]	Length [m]					
		300	400	500	600	800	1000
300	314-334	X	X	X	X		
	322-344	X	X	X	X		
	335-355	X	X	X	X		
350	347-367		X	X	X		
	350-368		X	X	X		
	360-380		X	X	X		
	365-385		X	X	X	X	
	382-402		X	X	X	X	
400	396-420		X	X	X	X	
	404-424		X	X	X	X	
	410-430		X	X	X	X	
	420-440			X	X	X	
	435-455			X	X	X	
500	468-488			X	X	X	
	485-505			X	X	X	
	527-547				X	X	
	545-575				X	X	
600	568-598				X	X	
	588-618				X	X	
	610-640				X	X	X
	628-658				X	X	X
	648-678					X	X
	668-698					X	X
	688-718					X	X
700	708-738					X	X
	728-758					X	X
750	748-778					X	X
	768-798					X	X



ASSEMBLY INSTRUCTIONS FOR UNIFIX MAXI CLAMPS WITH THE EASYGRIP EASY INSIDE FUNCTION

Assembly instructions for Unifix Maxi clamps with the Easygrip Easy Inside function

Preparation:

1. Clean the pipe around the damaged area to remove dirt.
2. Make sure that the pipe outer diameter corresponds to the range for the respective sealing clamp.
3. The sealing and the pipe can be moistened with soapy water to increase the assembly efficiency.
Mixing ratio (soap 1:5: water)

Assembly steps:

1. Unscrew the nuts on the thread protection cap (do not unscrew completely). Move the stainless steel bridge upwards and open the clamp. Place the clamp on the pipe (photo 1).
2. Hook up the bridge onto the Easygrip catches of the side supports (photo 2). Move the bridge even higher so that it rests against the ends of the side supports (photo 3).
3. Insert a wrench into the Easygrip catches of the side supports (photo 4) Take the wrench and the lower edge of the clamp simultaneously with one hand and squeeze them. In this way, the bridge can be easily moved to the required end position. The nuts can be easily tightened by hand. Make sure that the sealing tape adheres smoothly to the pipe.
4. Remove the wrench from the Easygrip catches and evenly tighten the nuts by hand. Then evenly tighten the nuts with a torque wrench: M12 to M14 nuts to a torque of 70 Nm and M16 nuts for steel, cast iron and fibre cement pipes to a torque of 120 Nm. In the case of PVC pipes, the tightening torque can only be about 50 Nm. After waiting about 15-20 minutes, tighten the nuts again with the same torque.

In the case of PE pipes, the following information must be considered:

Check again whether the length of the clamp has been calculated correctly (see page 5 for the length calculation)! After tightening the nuts by hand, they must be tightened to a torque of 70 Nm for M12 and M14 and 120 Nm for M16. Then wait

15 minutes and tighten the nuts again with the required torque. After waiting 15 minutes again, repeat tightening.

If possible, tighten the nuts again after 24 hours using the required torque.

5. In the case of multi-part sealing clamps and/or clamps with threaded or flange outlet, the same principle can be followed. In case of multi-part versions, there is no need to open the clamp from more than

one side.

Note:

1. Make sure that there is no dirt between the pipe and the stainless steel clamp.
2. Despite the Teflon-coated bolts and nuts passivated in yellow, the parts must be kept as clean as possible so that bolts and nuts do not jam.
3. Installation steps 1 to 3 can also be carried out next to the damaged area. Then, the pre-assembled clamp should be pushed onto the damaged pipe and fixed as described in step 4.



1



2



3



4

HOW TO FIND THE CORRECT ARTICLE NUMBER?

All GEBO article numbers have a specific meaning.

This means that the article number contains precise information about the product type/version, size and material of the product.

The article numbers form a modular system. This is an example:

AN EXAMPLE OF A PRODUCT NUMBER AND EXPLANATION:

51	Sealing clamp of stainless steel V2A with EPDM seal
06	Type Maxi, one-part, with female thread outlet
120131	pipe outer diameter: from 120 to 131 mm
20	length 200 mm
5	threaded outlet 1 1/2"

ALTOGETHER, IT LOOKS LIKE THIS:

51 . 06 . 120131 . 20 . 5

SEAL MATERIALS:		DIFFERENT TYPES:		PIPE DIAM- ETERS:	LENGTH:	THREADED CONNECTOR:			
50	V2A with NBR	01	Mini	*	from to	06	60 mm	1	1/2"
51	V2A with EPDM	02	Middle			10	100 mm	2	3/4"
52	V2A with Viton	03	Maxi 1			15	150 mm	3	1"
56	Slim with NBR	04	Maxi 2			20	200 mm	4	1 1/4"
57	Slim with EPDM	05	Maxi 3			30	300 mm	5	1 1/2"
58	Slim with Viton	06	Maxi 1 (female thread)			40	400 mm	6	2"
59	V4A with NBR	07	Maxi 2 (female thread)			50	500 mm	7	2 1/2"
60	V4A with EPDM	08	Maxi 3 (female thread)			60	600 mm	8	3"
61	V4A with Viton	09	Maxi 1 (male thread)			70	700 mm	9	4"
		10	Maxi 2 (male thread)						
		11	Maxi 3 (male thread)						
		12	Maxi 1 (female/male thread)						
		13	Maxi 2 (female/male thread)						
		14	Maxi 3 (female/male thread)						
		15	Maxi 2 (flange connector)						
		16	Maxi 3 (flange connector)						
		19	Tapping Saddles						
		21	Tapping Saddles						

**FLANGE
CONNECTOR:**

a	DN 50
b	DN 65
c	DN 80 Plus
d	DN 80
e	DN 100 Plus
f	DN 100
g	DN 125
h	DN 150 Plus
i	DN 150
j	DN 200 Plus
k	DN 200
l	DN 250

In Unifix products without a threaded or flanged outlet, the position marked in green is not available.



PRESSURE PIPE SIZE TABLE

DN PIPE TYPE	THREADED STEEL PIPE	STEEL BOILER TUBE	STEEL PIPE WITH PE CASING	STAINLESS STEEL	GREY CAST IRON	DUCTILE CAST IRON
40	48.3	51.0	51.9	48.3	56.0	56.0
50	60.3	57.0	63.9	60.3	66.0	66.0
65	76.1	70.0	79.7	76.1	77.0	82.0
80	88.9	88.9	92.5	88.9	98.0	98.0
100	114.3	108.0	117.5	114.3	118.0	118.0
125	139.7	133.0	144.0	139.7	144.0	144.0
150	168.3	159.0	168.3	168.3	170.0	170.0
200	219.1	216.0	219.1	219.1	222.0	222.0
250	273.0	267.0	273.0	273.0	274.0	274.0
300	323.9	318.0	323.9	323.9	326.0	326.0
350	355.6	368.0	360.0		378.0	378.0
400	406.4	419.0	410.8		429.0	429.0
450	457.0		461.4		480.0	480.0
500	508.0		513.0		532.0	532.0
			564.0		583.0	
600	610.0		615.0		634.0	635.0
			665.0			
700	711.0		716.0		738.0	738.0
			767.0			
800	813.0		819.0		842.0	842.0
			870.0			
900	914.0		920.0		945.0	945.0
1000	1016.0		1022.0		1048.0	1048.0

PRESSURE PIPE SIZE TABLE

PE	PVC	PE-Xa	FIBRE-CEMENT PIPES			
			PN 10	PN 10	PN 12.5	PN 12.5
			cal.	uncal.	cal.	uncal.
50.0	50.0	50.0				
63.0	63.0	63.0				
75.0	75.0	75.0			83.0	85.0
90.0	90.0	90.0	98.0	102.0	100.0	104.0
110.0	110.0	110.0	120.0	128.0	124.0	130.0
125.0	125.0	125.0				
140.0	140.0	140.0	149.0	154.0	153.0	159.0
160.0	160.0	160.0	178.0	184.0	182.0	190.0
180.0	180.0	180.0				
200.0	200.0	200.0	234.0	243.0	240.0	252.0
225.0	225.0	225.0				
250.0	250.0	250.0	286.0	288.0	296.0	308.0
280.0	280.0	280.0				
315.0	315.0	315.0	342.0	346.0	352.0	368.0
355.0	355.0	355.0	400.0	404.0	410.0	428.0
400.0	400.0	400.0	456.0	460.0	470.0	488.0
450.0	450.0	450.0	510.0		524.0	546.0
500.0	500.0	500.0	564.0		582.0	606.0
560.0	560.0	560.0				
630.0	630.0	630.0	678.0		698.0	726.0
710.0	710.0	710.0		792.0		
800.0	800.0	800.0				
900.0	900.0	900.0				
1000.0	1000.0	1000.0		1126.0		