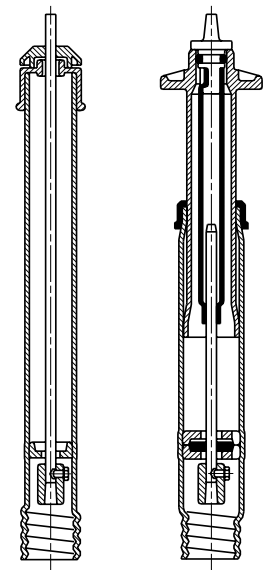


rigid or telescopic

Extension Spindle for Service Valves with threaded connection for spindle DN 3/4"-2"

Order no.	Version	Pipe cover depth	
9101	rigid	0,75 m	●
		1,00 m	●
		1,25 m	●
		1,50 m	●
		2,00 m	●
		2,50 m	●
9601	telescopic	0,60 - 0,80 m	●
		0,80 - 1,20 m	●
		1,30 - 1,80 m	●
		2,00 - 2,50 m	●
		2,50 - 3,50 m	●



rigid

telescopic

Extender for rigid spindle

Order no. 7830 price for 1st m

Order no. 7831 price for each additional 0,5 m
please specify dimension and length

Extension Spindle for Hawle-A Valves and Elypso Valves DN 50-200

Order no.	Version	Pipe cover depth	Dimensions/DN				
			Hawle-A only	Elypso 50-80	Hawle-A + Elypso		
			50/65	Hawle-A 80	100/125	150	200
9000A	rigid	1,00 m	●	●	●	●	●
		1,50 m	●	●	●	●	●
9500A	teles- copic	0,90 - 1,15 m	●				
		1,30 - 1,80 m	●	●	●	●	
		1,35 - 1,80 m					●
		2,00 - 2,50 m	●	●	●	●	●
		2,50 - 3,50 m		●	●	●	●

- High quality materials for optimal corrosion protection
- Easy installation and efficient operation
- Manufactured with environmentally friendly processes and responsible use of resources
- Extension Spindles for Elypso-Valves: one extension spindle for several dimensions
- Can be located by metal detectors

Hawle's Telescopic Extension Spindle is the best solution for efficient below ground installation.

Hawle's Telescopic Extension Spindle is infinitely adjustable for a perfect match to any ground level.



rigid telescopic
DN 50/65
Version Hawle-A

rigid telescopic
DN 50/200

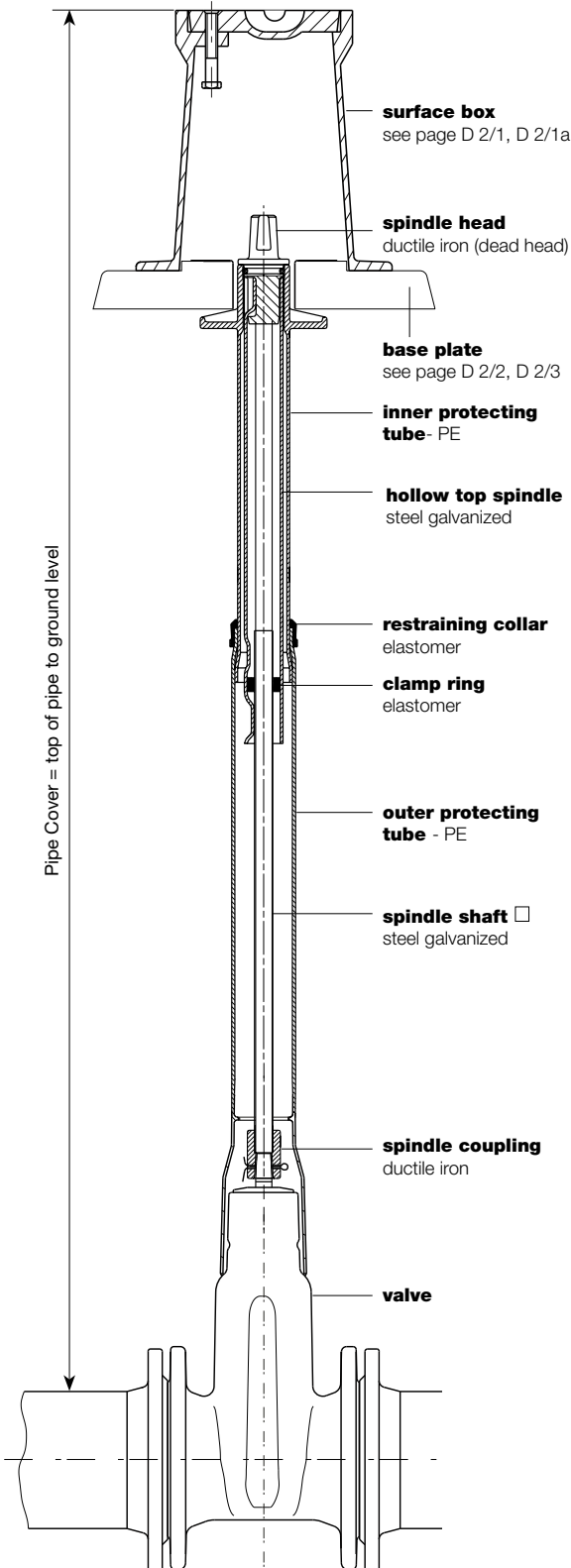
Extension Spindles

All extension spindle dimensions and types (rigid or telescopic) are protected against dirt and surface water.

The telescopic extension spindle can be progressively adjusted to ground level. This is done by pushing or pulling the protecting tube and the spindle shaft.

and fitting from surface impact. Supplied with or without surface box and base plate.

The telescopic effect protects the pipe



Spindle head

	for service valves	rigid / telescopic	a 13 mm
			b 15 mm
			c 24 mm
	for gate valves	telescopic	a 27 mm
			b 32 mm
	rigid	□ 30 mm	

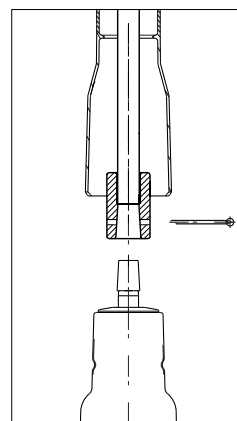
Weight of Extension Spindle with threaded connection for Service Valves

Order-No.	9101					9601					
Length m	0,75	1,00	1,25	1,50	2,00	2,50	0,6-0,8	0,8-1,2	1,3-1,8	2-2,5	2,5-3,5
Weight Kg	1,20	1,70	2,20	2,70	3,70	4,70	3,50	4,90	2,40	1,60	6,90

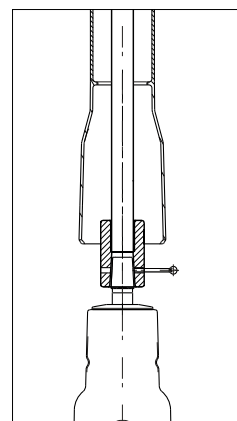
Weight of Extension Spindle for Hawle-A & Elypso-Valves

Version	Order-No.	Pipe cover depth	Dimensions/DN				
			Hawle-A only		Hawle-A + Elypso		
			50/65	Hawle-A 80	100/125	150	200
rigid	9000A	1,00 m	3,30	3,20	3,30	2,95	2,80
		1,50 m	5,30	5,30	5,30	5,00	4,80
telescopic	9500A	0,90 - 1,15 m	4,30				
		1,30 - 1,80 m	6,80	6,80	6,80	6,50	
		1,35 - 1,80 m					6,30
		2,00 - 2,50 m	9,40	9,40	9,50	9,20	9,00
		2,50 - 3,50 m		12,87	12,90	12,70	12,50

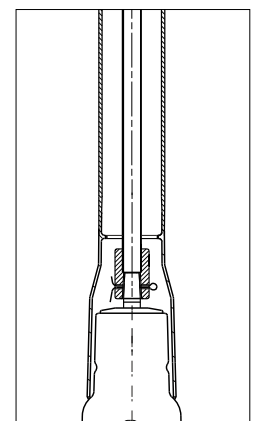
Assembly:



Slide back outer protecting tube, remove split pin



Place extension spindle shaft over valve spindle



Slide outer protecting tube over gate valve housing

Telescopic Extension Spindle for Hawle-A & E0-Valves, DN 80-200