

# DS TRP



## PROTECTED ROLLERS MULTI-JET METER

DS TRP represents the ultimate multijet meter expression. Thanks to its mechanical transmission, it offers high metrological performance and is insensitive to external magnetic fields. Its “protected rollers” solution, first developed by Maddalena, ensures perfect legibility over time. Robust, long lasting and suitable for the most challenging environments, it is compatible with all types of water. It can be equipped with the latest remote data transmission technologies.

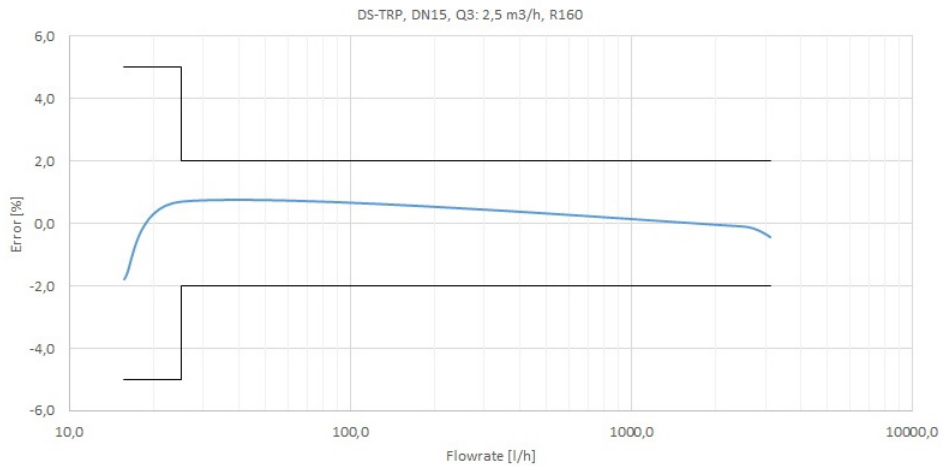
# DS TRP

## FEATURES

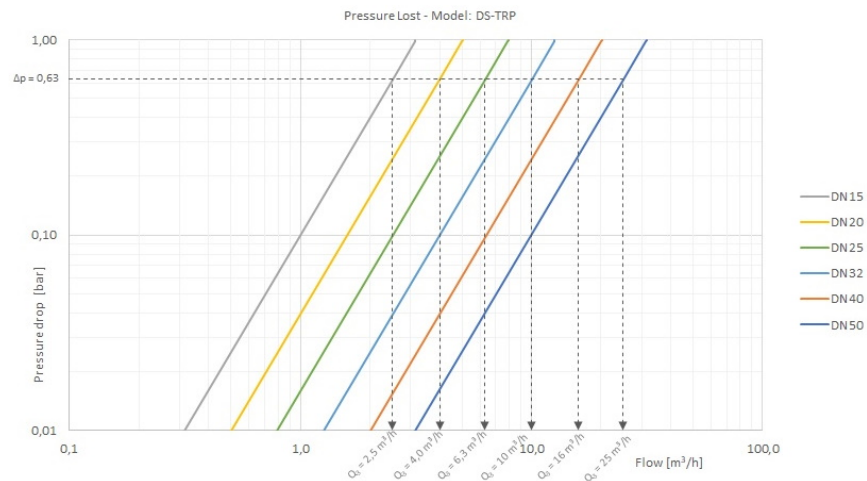
- Protected rollers multi-jet meter for cold water
- Ideal for utilities and outdoor installations
- MID-certified: R max 200
- DN: 15 to 50
- Pre-equipped for optional reed switch (1P=1-10-100-1000L) or static pulse emitter (1P=1-10L)
- Health certifications available for a number of countries
- Mechanical transmission unaffected by external magnetic fields
- Mineral glass lens
- Number rollers, approval class and serial number are located in the protected part



## TYPICAL ERROR CURVE



## HEAD LOSS DIAGRAM



## HYDRAULIC PERFORMANCE

Size	mm	15	20	25	32	40	50
	in	½	¾	1	1 ¼	1 ½	2

Modulo B no. TCM 142/08-4604

Modulo D no. 0119-SJ-A010-08

Q<sub>3</sub>/Q<sub>1</sub> = R  
Referred to installation position H↑ ≤ 200

### MID standard performance \*

Q <sub>3</sub>	m <sup>3</sup> /h	2,5	4	6,3	10	16	25
Q <sub>4</sub>	m <sup>3</sup> /h	3,13	5	7,88	12,50	20	31,25
<b>R</b>		<b>160</b>					
Q <sub>1</sub>	l/h	15,63	25	39,38	62,50	100	156,25
Q <sub>2</sub>	l/h	25,01	40	63,01	100	160	250

\* Other values of R available upon request.

## TECHNICAL DATA

Maximum permissible error between Q<sub>1</sub> and Q<sub>2</sub> (excluded) +/- 5%

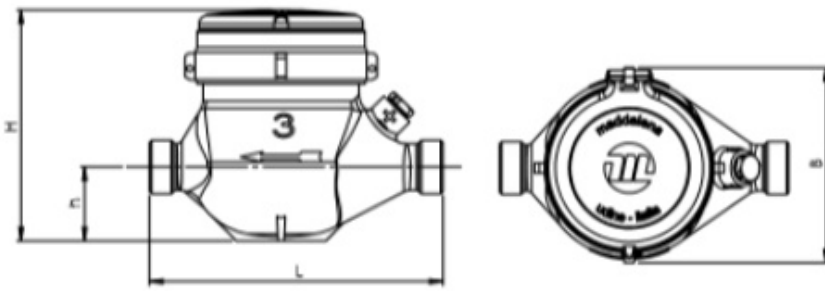
Maximum permissible error between Q<sub>2</sub> (included) and Q<sub>4</sub>  
+/- 2% with water temperature ≤ 30°C  
+/- 3% with water temperature > 30°C

Temperature class T30, T50

Flow profile sensitivity classes U0 - D0

Starting flow rate	l/h	4-5	7-9	16-18	22-24	28-30	
Head loss		ΔP63					
Nominal pressure	bar	16					
Maximum reading	m <sup>3</sup>	100.000				1.000.000	
Minimum reading	m <sup>3</sup>	0					
Indicative weight	kg	1,45	1,61	2,3	2,4	4,5	14

## DIMENSIONS



Size	mm	15	20	25	32	40	50	
	in	½	¾	1	1 ¼	1 ½	2	
Thread	in	G ¾ B	G 1 B	G 1 ¼ B		G 1 ½ B	G 2 B	G 2 ½ B
L	mm	105(V) – 110 – 130 – 145 – 160 – 165 – 170 – 190		160 – 190	220 – 260		300	270 – 300 (FL)
H	mm	112,5		123		163	175	
h	mm	36,5		43		64,5	77	
B	mm	97				130		154

## COMMUNICATION MODULES



ARROW<sup>EVO</sup> 868  
SPLIT



ARROW<sup>WAN</sup> 169  
SPLIT



ARROW<sup>WAN</sup> 868  
SPLIT



ARROW<sup>WAN</sup> NB-IoT  
SPLIT



QUADRAPLUS



REED SWITCH

For more information on all the accessories available, consult the specific technical data sheets on the website [www.maddalena.it](http://www.maddalena.it)