

## M-BUS PULSE COLLECTOR

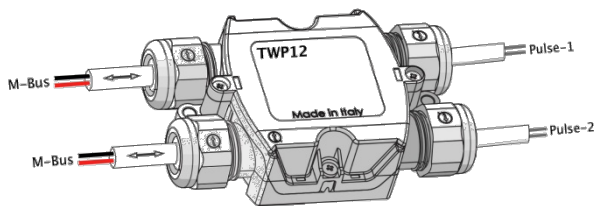
Twin-Pulse is a pulse counter for metering applications. It is an M-Bus based device and operates in slave configuration. It can manage simultaneously up to two pulse inputs. Twin-Pulse has a single primary address and a single secondary address for both counter inputs for quick installation and easy management of readings.

Care must be taken that each input is assigned the correct count line.

The two counter inputs are identified as J1 (counter 1) and J2 (counter 2).

Twin-Pulse is supplied with power by the M-Bus network.

The device can be set up with the **MBus Tool** software.



## TECHNICAL SPECIFICATIONS

Counter inputs	2 inputs: input J1 counter 1, input J2 counter 2
Input requirements	Floating contacts only (reed or open collector pulser)
Closed contact max. resistance	10 K $\Omega$
Max. line impedance with open contact	C < 2.2 nF with open contact
Minimum detectable pulse length	38 ms
Battery type	CR 2032
Estimated battery life	1 year without M-Bus connection
Communication protocol	Standard M-Bus
Baud rate utilizzabili	300, 2400, 9600 bps
Secondary address	8 digit BCD, flash memory storage
Power consumption of bus connected module	1.4 mA (<1 unit load)
Data sent in the telegram	<ul style="list-style-type: none"> <li>Primary address</li> <li>Manufacturer ID</li> <li>Device type (counter etc.)</li> <li>Generation number</li> <li>Progressive message number</li> <li>Alarms</li> <li>Measuring unit code of the reading</li> <li>Instantaneous reading in litres of counter 1 and counter 2</li> </ul>
Alarms	Battery service life < 1 month
Housing protection rating	IP68
Operating temperature	0 °C-55 °C
Storage temperature	-20 °C-70 °C
Humidity (non-condensing)	10%-70%

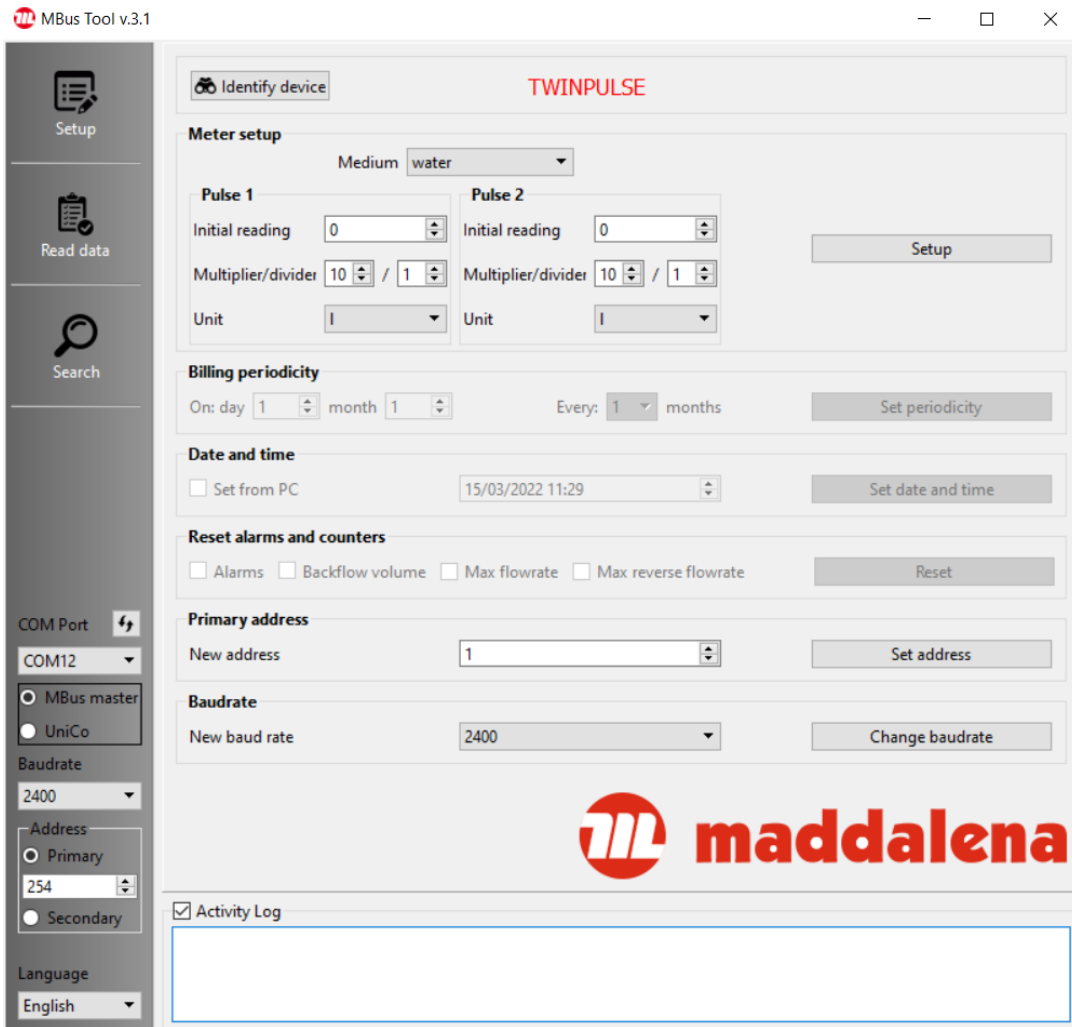
## DEFAULT PARAMETERS

When the device is activated for the first time the following default parameters are settled.

Default primary address	0
Serial port setting	8 bit even parity 2400 bps
Reading set-up (both counters)	Medium water, 10 litres/pulse, counter = 0, multiplier 1/1

## DEVICE SET-UP

In order to set up or change the default settings, an M-Bus interface and the **MBus Tool** software are necessary.



## DIMENSIONS

